



SERVICE PARTS LIST

BULLETIN NO.
54-07-2260

SPECIFY CATALOG NO. AND SERIAL NO. WHEN ORDERING PARTS		REVISED BULLETIN	DATE
LIGHT COMMERCIAL DIGITAL MULTIMETER			Oct. 2010
CATALOG NO.	2216-20	WIRING INSTRUCTION	
SERIAL NUMBER	B8XA		

EXAMPLE:

00	0
----	---

 Component Parts (Small #) Are Included
 When Ordering The Assembly (Large #).

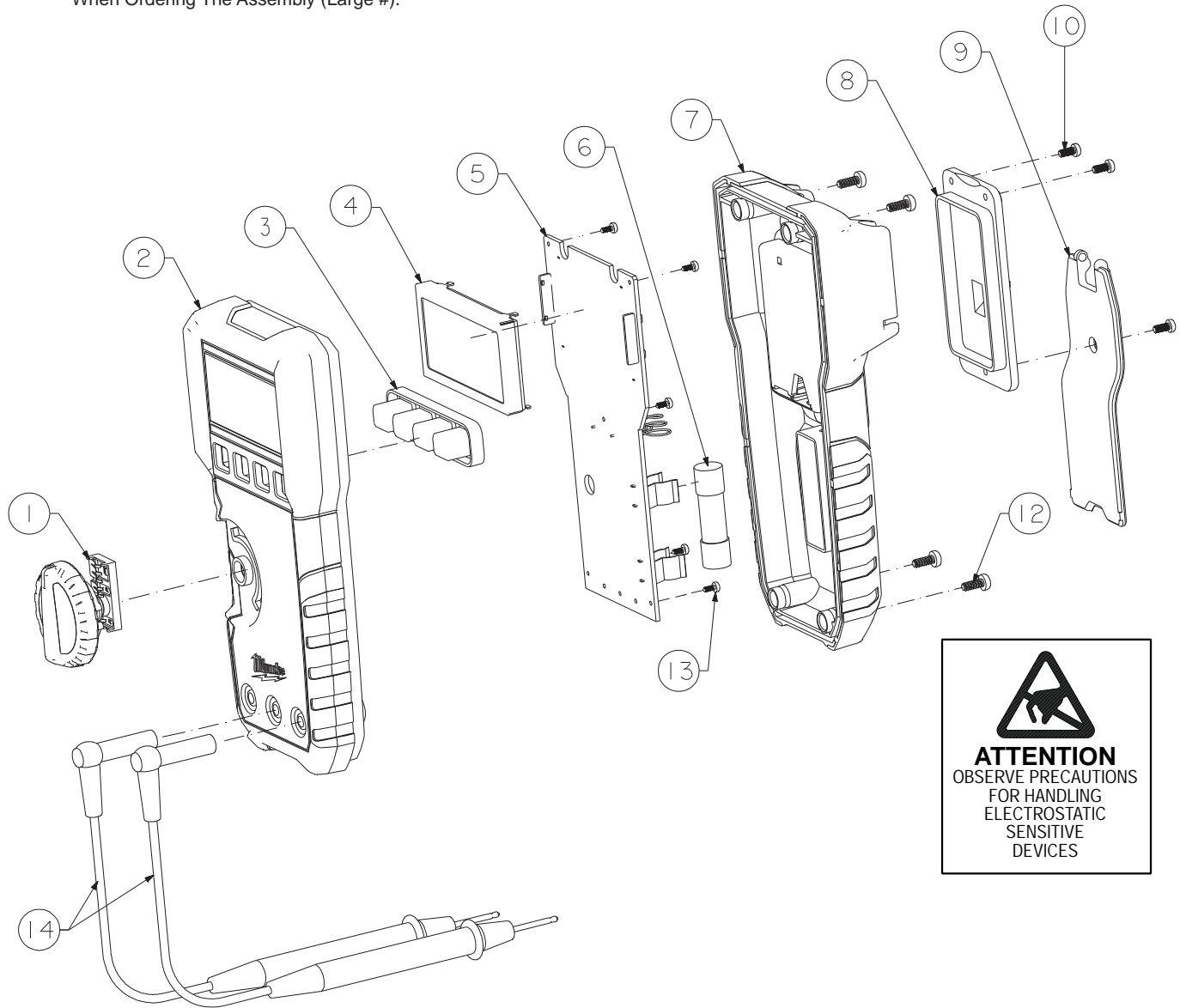


FIG.	PART NO.	DESCRIPTION OF PART	NO. REQ.
1	23-66-0545	Rotary Switch	(1)
2	31-50-1105	Top Case	(1)
3	42-42-0050	Rubber Keypad	(1)
4	44-06-0015	LCD Module	(1)
5	22-06-0015	Main PCA	(1)
6	22-89-0300	Fuse	(1)
7	31-50-1110	Bottom Case	(1)
8	31-21-0035	Battery Door	(1)
9	31-70-0160	Bale, DMM Stand	(1)
10	05-81-0260	Battery Door Screw	(3)
12	05-81-0265	Bottom Case Screw	(4)
13	05-81-0370	PCA Screw	(5)
14	49-77-1001	Test Lead Set	(1)